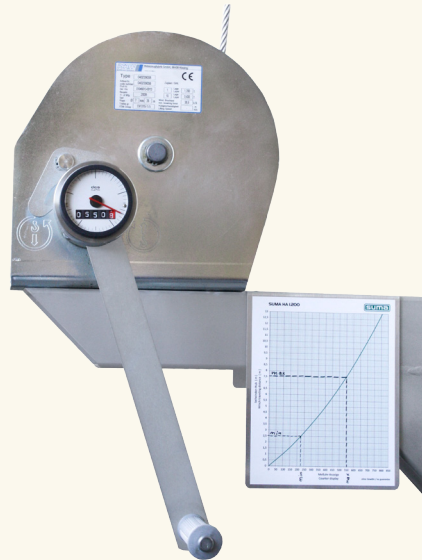


# Height indicator for submersible mixers



Type HA 650

Type HA 1.200

Elevation determined from the chart  
Adapted to SUMA winch  
For containers up to max. 32.8 ft height

## Application

A pendulum gauge system with analogue display SUMA chart to illustrate the current height of the submersible agitator in the tank

For container heights up to max. 32.8 ft  
Adapted to the SUMA winch system (included)

## Materials

Housing of the display made of plastic (Polyamide PA)

- Glass fiber reinforced
- Matt, black

Window made of plastic (PA)

- Crystal clear and resistant to aging
- Impact-resistant

Body / lens

- Heat resistant to 212 °F
- Oil and solvent resistant

scale aluminum

- Matt anodised
- divisions black

counter

- white numbers
- numbers integers in black wheels
- decimal places in red

Spherical ball bearing system

Degree of protection IP 67

## Operating instructions

The elevation indicator is to be mounted on the SUMA suspension device and gas-tight feed through for biogas suitable container.

Housing, shaft and indicator window are ultrasonically welded, so the position indicator is completely sealed, splash proof and corrosion-proof (IP 67).

### Installation

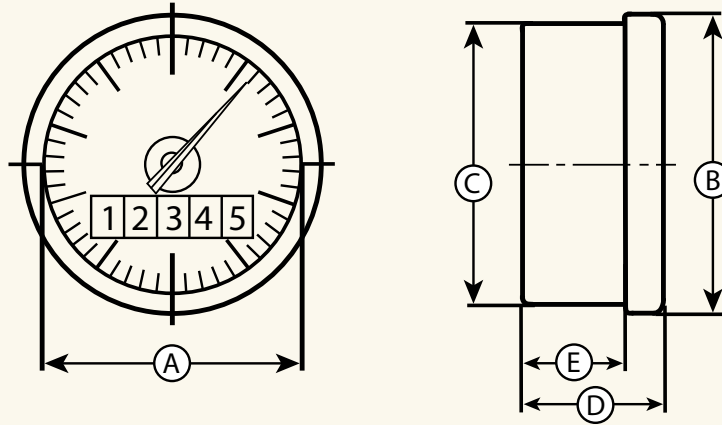
- Set dial indicator to „0“ and mount on winch
- Thread the rope and reel up until tension is on the rope but the submersible mixer is in lowest position
- Mark the dial gauge value and the winch hub in SUMA chart as the lowest position
- Raise the submersible agitator to the highest stirring position
- Mark the gauge numbers and winch hub in SUMA chart as the highest position

### ORDERING Instructions:

According to the winch type (tensile load) order:

	<i>Part number</i>
Type -> 650 (Lifting capacity 3160 lbs):	125912
Type -> 1.200 (Lifting capacity 3627 lbs):	125914

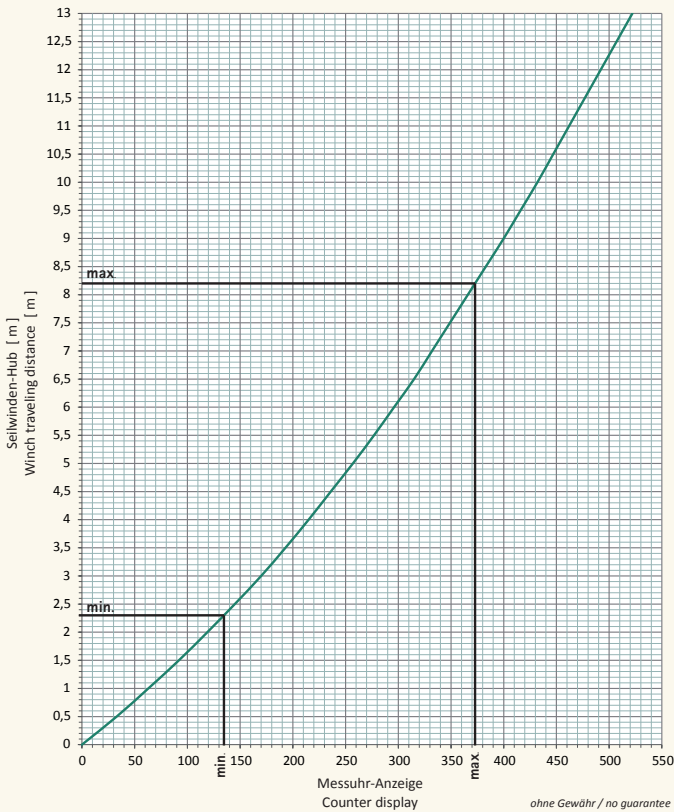
# Height indicator for submersible mixers



## Dimensions

Type	A [in]	B [in]	C [in]	D [in]	E [in]						
HA 650 / 1200	2.4	2.7	2.6	1.3	1.0						

SUMA HA 650



SUMA HA 1200

